

# WEHRLE DEVELOPMENT, LTD.

**WWW. WEHRLE DEVELOPMENT.COM**

**CALL TODAY FOR MORE INFORMATION 419-841-5363**

14638 Olde Trail Dr. Perrysburg, OH. 43551

**Lot #67 Saddlebrook Condo** – 1827 Sq. ft. -

3 bedrooms, 3 full baths, basement, 1<sup>st</sup> floor laundry room. Granite counters kitchen. Hardwood floors kitchen, dinette and foyer. Ceramic tile all baths and laundry room, vaulted ceilings great room and front bedroom. Balcony overlooking the great room. You still have time to choose your color choices.



FRONT ELEVATION

**Price \$229,900**

The condo is a story and half and sets on a beautiful pond. The master bedroom includes a master bath with a large walk-in closet. Vaulted ceilings in the great room, with scraped hardwood floors and ceramic tile included. The floor plan includes custom cabinets with granite counters and stainless steel appliances. The exterior of this home includes 18' drive, sprinkler system, landscape and seeding. Let us take care of the lawn, snow removal, garbage pick-up and maintenance of exterior. All with low monthly fees.

## **Customized for your needs!**

We offer many opportunities to create a living space flexible for your needs. Our up to date interiors are custom and provide you with more choices, and more colors.

**We offer co-operate with real estate agents**

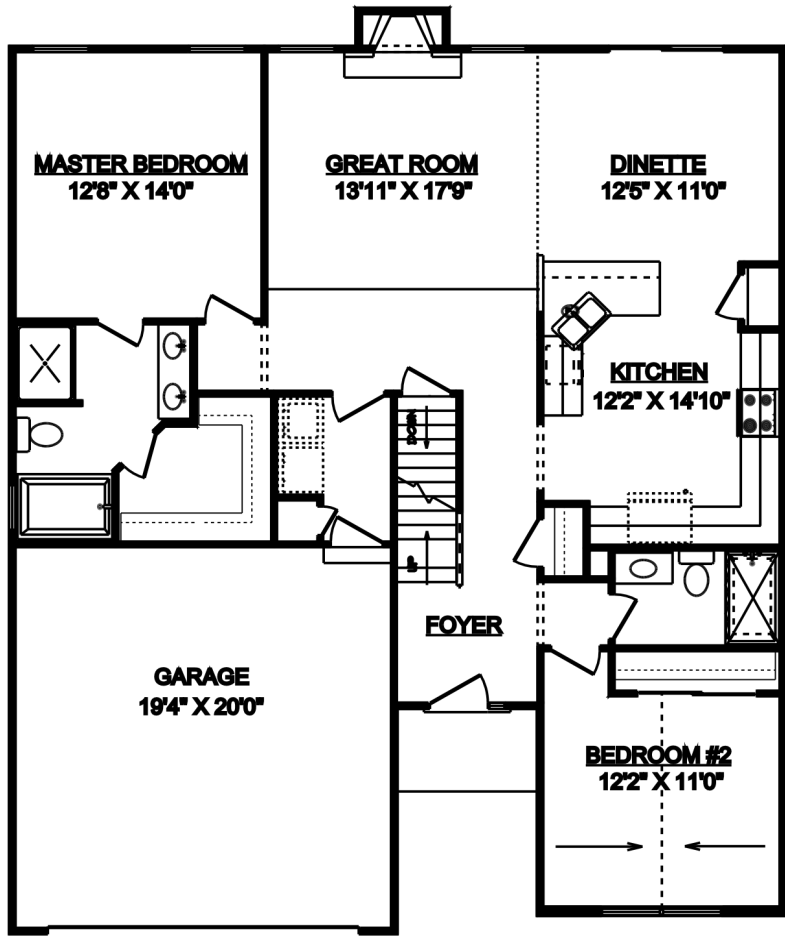
## **Lots Available for you to Build!**

We have many lots to choose from. Reserve your lot today and let us build your new home!

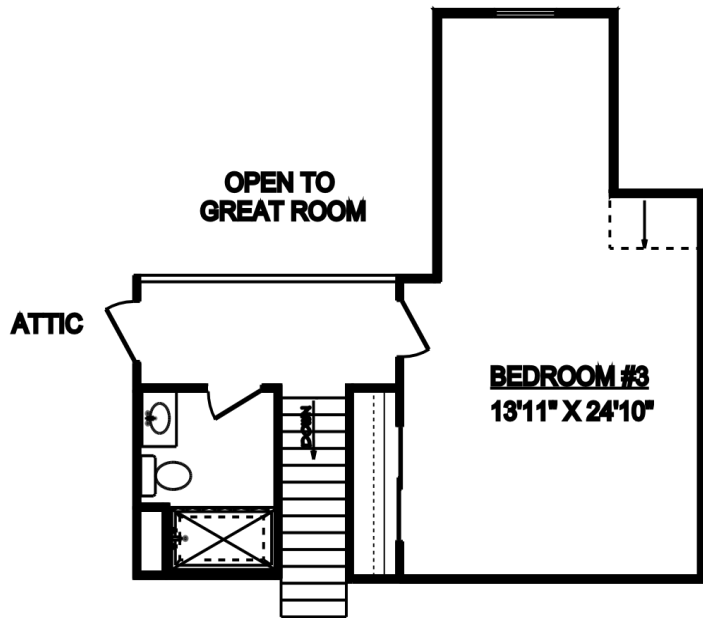
**Sales Consultant**

**Cyndi Sculfort 419-367-5227**

email: [cyndi@wehrledevelopment.com](mailto:cyndi@wehrledevelopment.com)



**MAIN FLOOR PLAN**



**SECOND FLOOR PLAN**